

ASSEMBLY INSTRUCTIONS

Garden Bench | 79"



PIECES

1 x



Board (w/ 12 holes)

3 x



Board (w/ 8 holes)

4 x



Support foot

4 x



Plastic lock

36 x



Screw 2"

4 x



Screw 1"

40 x



Hex nut

40 x

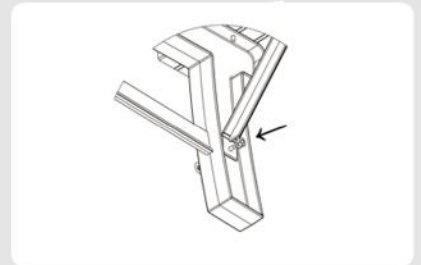
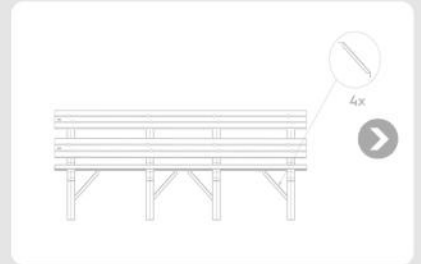
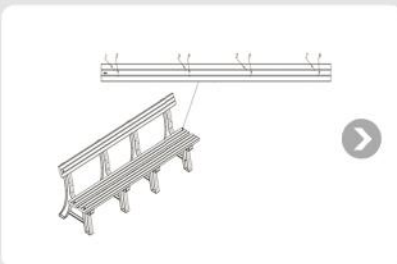
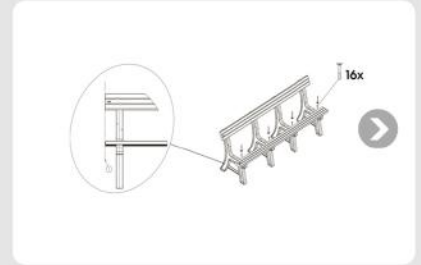
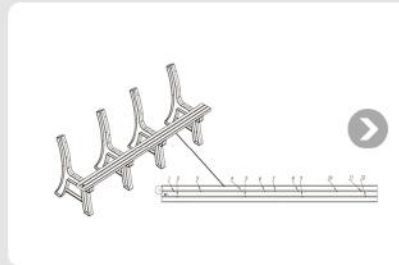


Washer

STEP BY STEP

Align the seat and back boards as shown. Insert screws, washer and nut without tightening.

After finishing the product assembly, tighten the screws, observing the alignment of the seat nuts.



▼ END

Contact us:

For US Corporation:

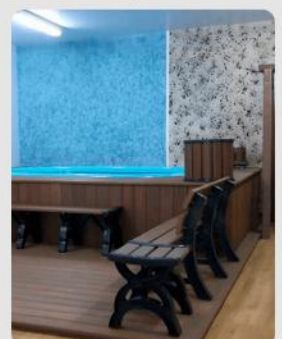
www.foruseco.com

1-561-774 0707

In Brasil:

www.inbrasil.ind.br

+55 042 3135-5000



INSTRUCCIONES DE ENSAMBLE

Banco de Jardim | 2,00m



In Brasil

PIEZAS

1 X



Tornillo 2"

36 X



Tornillo 2"

3 X



Tabla (c/ 8 agujeros)

4 X



Tornillo 1"

4 X



Pie de soporte

40 X



Tuerca hexagonal

4 X



Cierre plástico

40 X



Arandela

MANUAL DE MONTAGEM

Banco de Jardim | 2,00m



In Brasil

PEÇAS

1 X



Tábua (c/ 12 furos)

36 X



Parafuso 2"

3 X



Tábua (c/ 8 furos)

4 X



Parafuso 1"

4 X



Pé de Banco

40 X



Porca sextavada

4 X



Trava plástica

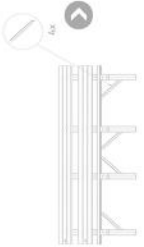
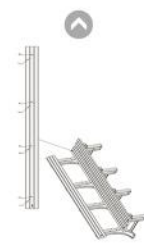
40 X



Arreuela

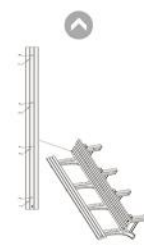
PASO A PASO

1. Alinee el asiento y los tableros traseros como se muestra.
2. Inserte los tornillos, la arandela y la tuerca sin apretar.
3. Después de terminar el ensamblaje del producto, apriete los tornillos, observando la alineación de las tuercas del asiento.



PASO A PASO

1. Alinhe as tábuas do assento e do encosto conforme imagem;
2. Insira parafuso, arreuela e porca sem apertá-los;
3. De os apertos finais nos parafusos somente com as chaves plásticas que acompanham o kit, observando o alinhamento do banco.



Contáctenos:

For US Corporation:

www.foruseco.com

1-561-774 0707

In Brasil:

www.inbrasil.ind.br

+55 042 3135-5000

▼ FIN



▼ FIM

